

# Citizen-Ship

Pioneer developer of Radio Control Equipment on BOTH Citizen's bands —465 mc and 27.255 mc.

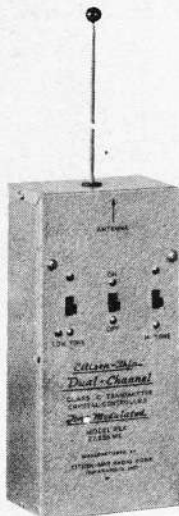
Presents

## DUAL CHANNEL Tone Modulated REX Transmitter

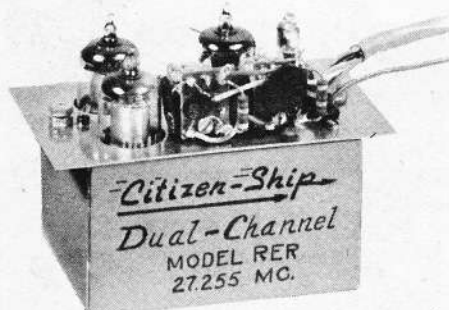
The REX Transmitter is a 3 tube fully tuned and adjusted 27.255 mc tone modulated transmitter for multi-control of model planes and boats. MOPA Circuit. Right switch gives hi tone —Left switch gives low tone. Fixed tuning of tones requires no adjustments to match receiver selective filters. Long battery life.

Price.....

**\$39<sup>95</sup>**



## Citizen-Ship RER Receiver



The RER Receiver is a compact, lightweight, rugged unit which will selectively close one of two relays upon receiving the correct audio tone. Tuning is accomplished by built-in selective filters which are fixed and non-critical. The simplest, least troublesome receiver yet devised for multi-channel operation.

PRICE..... **39<sup>95</sup>**

### INSTALLATION KIT FOR RER RECEIVER

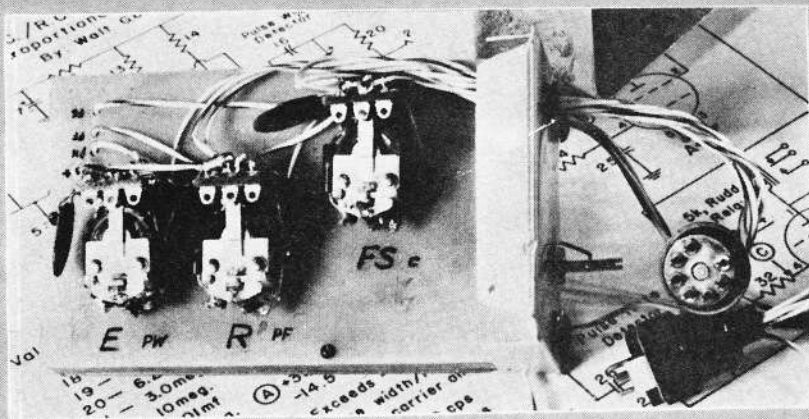
- Contains:
- PLUG AND SOCKET WITH RUBBER SHIELD
  - 500,000 OHM POTENTIOMETER
  - 2 POLE SWITCH
  - PHONE PLUG AND OPEN CIRCUIT JACK
  - 12" OF 8 CONDUCTOR CABLE

Model IRE..... **\$4<sup>95</sup>**

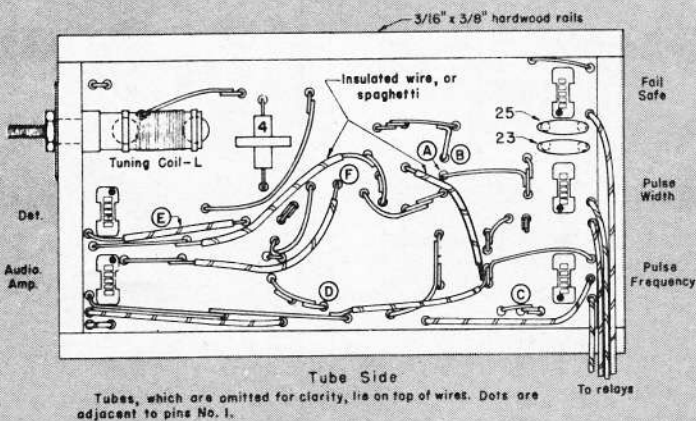
- Also on 27.255 mc:
- FL Transmitter Kit ..... \$19.95
  - FLX Transmitter ..... 24.95
  - PR Receiver Kit ..... 19.95
  - PLR Receiver ..... 24.95
- 465 mc:
- CC-1 Transmitter ..... 34.95
  - CR Receiver ..... 29.95
  - AR Receiver ..... 24.95
- Citizen-Ship Accessories:
- SE Escapement ..... 7.95
  - PSN Escapement ..... 5.95
  - MSC (Motor Speed Control) ..... 3.95
  - Speed Control System ..... 17.50  
(consists of SE, PSN, MSC)
  - Citizen-Ship Test Meter ..... 22.95
  - Bell Crank and Rudder Horn..... .75

# Citizen-Ship

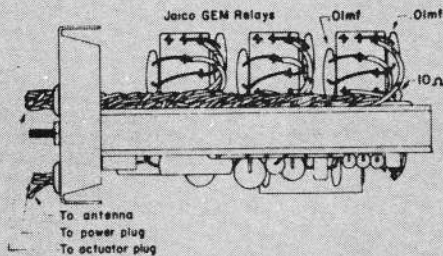
RADIO CORPORATION  
620 E. 64TH ST. INDIANAPOLIS 20, IND.



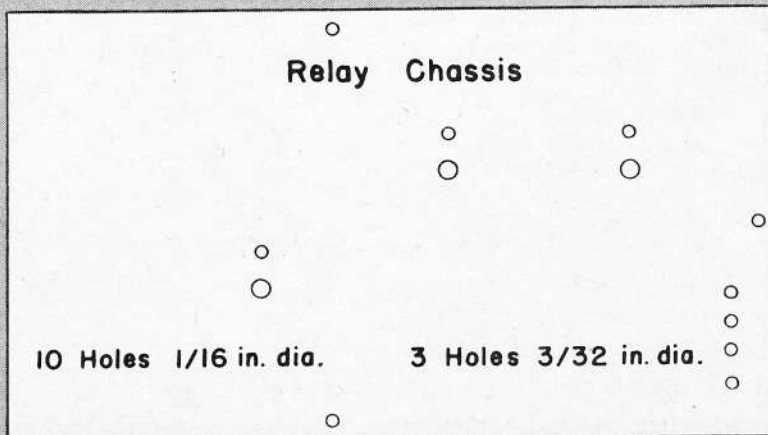
## Dr. Good's Two-Tone Pulse Width Dual Proportional R/C Receiver



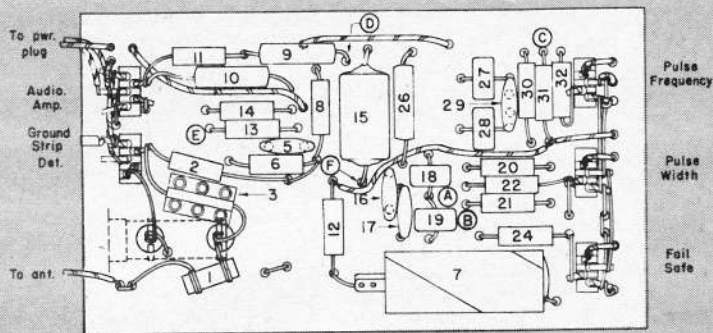
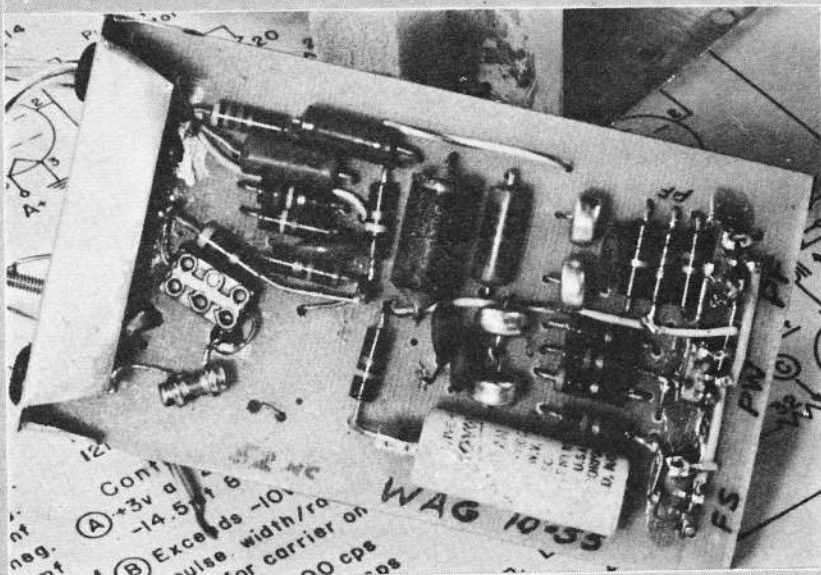
Tubes, which are omitted for clarity, lie on top of wires. Dots are adjacent to pins No. 1.



Assembled Receiver  
The physical arrangement shown is designed to fit in a National RO coil shield.  
The end plate shown above is made of aluminum, to fit the coil shield

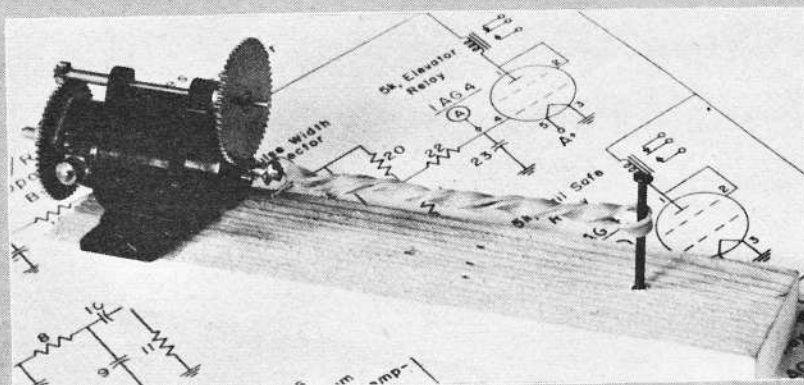


10 Holes 1/16 in. dia.      3 Holes 3/32 in. dia.

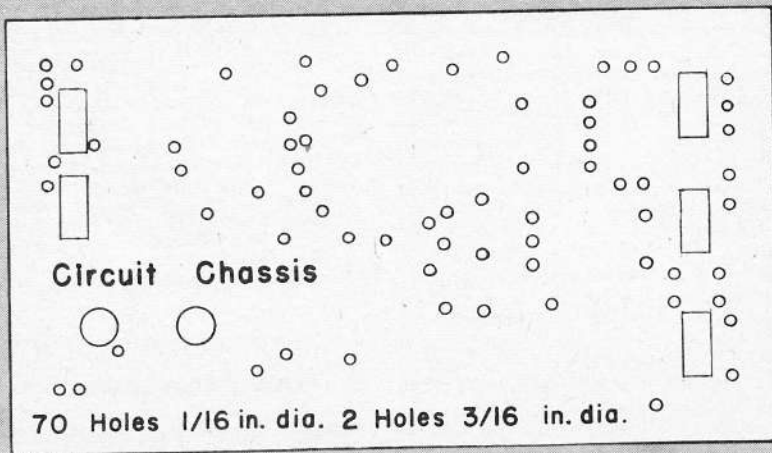


Component Side

Components No's. 5, 16, 17, 23, 25, and 29 are disc capacitors standing on edge with leads protruding through holes beneath them.



Double geared Mighty Midget actuator motor mounted on test board; centering rubber band (size 32) attached to motor shaft. Top photo shows component board.



70 Holes 1/16 in. dia. 2 Holes 3/16 in. dia.

What Do You Fly?

FREE-FLITE STUNT COMBAT SPEED R. C.

THERE IS A **Tornado** PROPELLER MADE FOR JUST THAT PURPOSE!

FUEL PROOF

HEAT PROOF

GRISH BROTHERS ST. JOHN 1. INDIANA



THOSE WHO KNOW CHOOSE **DUMAS**

POWER BOAT MODELS



SEND 10¢ (COIN OR STAMPS) FOR THE NEW **DUMAS CATALOG**

**DUMAS** MODEL PRODUCTS

2114 S. ALVERNON WAY DEPT. A TUCSON, P.O. Box 6096 ARIZONA

**GEM R C RELAY**



Try these RC beauties! Satisfied users everywhere. NEW . . . crash resistant. Hi-sensitivity. Lo-contact resistance. Fine silver points. Factory adjusted to pull in 1.4 MA. Drop out 1.2 MA DC. Extra tie-point terminals to mount cond'rs or res'trs. 7,500 and 10,000 OHM Coils are also available at extra cost. AT DEALER'S or by Mail

WEIGH LESS THAN 1/2 OZ. SIZE: 3/4 H, 17/32 W, 1-1/16 L. MOUNTING: ONE SCREW COIL: 5000 OHMS COMPLETE \$4.95 ea.

**JAICO** PRODUCTS 1921 W. HUBBARD • CHICAGO 22