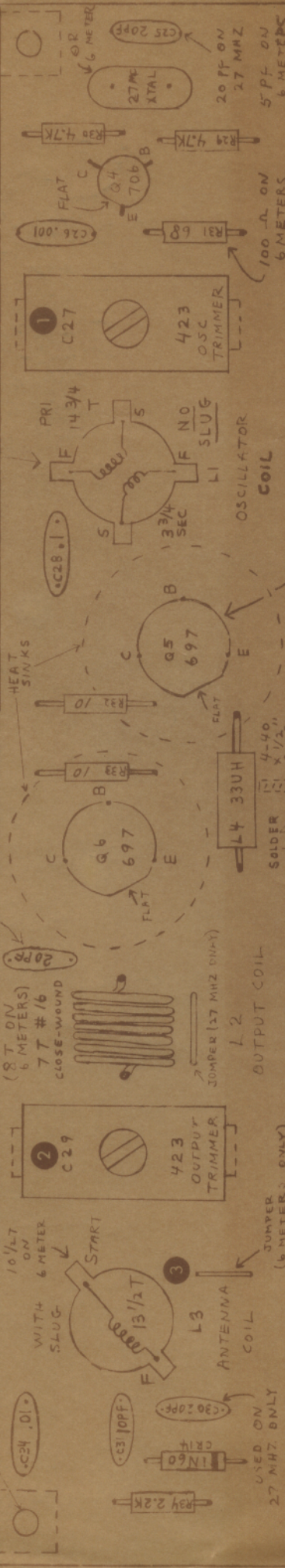


10111169

# C525 T PROPORTIONAL TRANSMITTER

6 METER COIL HAS 7 3/4 T PRI. AND 2 3/4 T SEC.

ATTACH BRACKETS TO CASE WITH 4-40 X 1/4" SCREWS, LOCKWASHER AND NUT



Q5 AND Q6 ARE 706'S ON 6 METERS

Q5 697  
Q6 697

OUTPUT COIL L2

ANTENNA COIL L3

OSCILLATOR COIL

USED ON 27 MHZ ONLY

USED ON 6 METERS ONLY

CUT PLASTIC TABS OFF CONTROL POTS BEFORE INSTALLING

RED WIRE  
WHITE WIRE R16 5K  
BLACK WIRE

ANTENNA BRACKET (ATTACH TO FRONT SIDE OF BOARD WITH 4-40 X 1/4" SCREWS [2 PLACES])

BLACK  
WHITE R8 5K  
RED

ELEV. CONTROL POT

BEFORE TUNING OR CALIBRATING TX, SET ARMS ON SMALL POTS 4 THRU 10 AS INDICATED. WHILE HOLDING TRIM LEVER, ROTATE EACH CONTROL POT (FRICTION ADJUSTMENT) SO THAT THE TAB TO WHICH EACH BLACK WIRE IS SOLDERED IS AT 1 O'CLOCK POSITION (BETWEEN WHITE AND BLACK LUG POSITIONS SHOWN ON THIS DRAWING). THESE POT POSITIONS WILL CLOSELY APPROXIMATE FINAL ADJUSTMENT POSITIONS.

CONTROL POT 7 IS THE SMALL POT BELOW BOARD. (5TH CHANNEL)

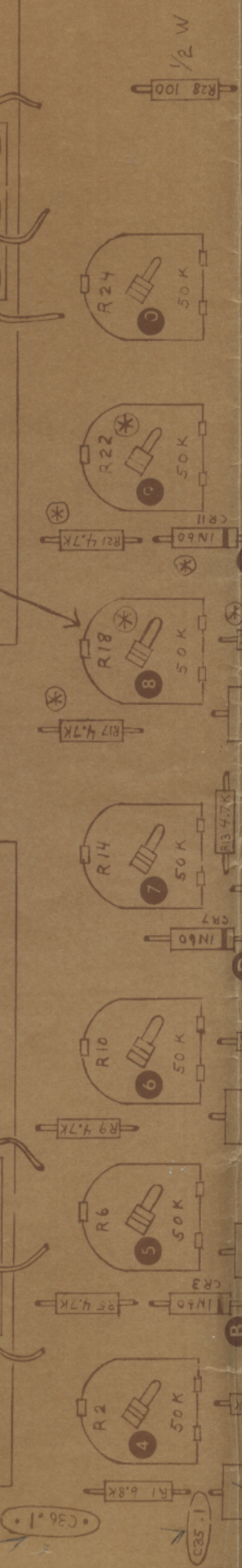
ALL WIRES 2 1/2" LONG

ALL WIRES 2 1/2" LONG

SHRINK TUBING HERE ON ALL CONTROL POTS (15 PLACES)

AFTER ASSEMBLY, SET ARMS ON ALL SMALL POTS TO 12 O'CLOCK

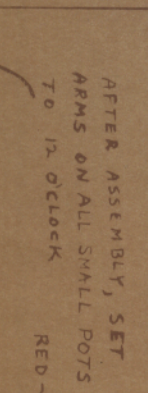
RUDER CONTROL POT BLACK



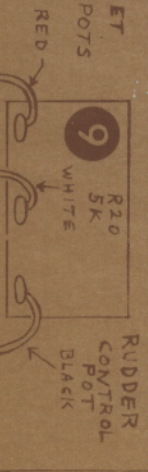


APPROXIMATE FINAL ADJUSTMENT POSITIONS.

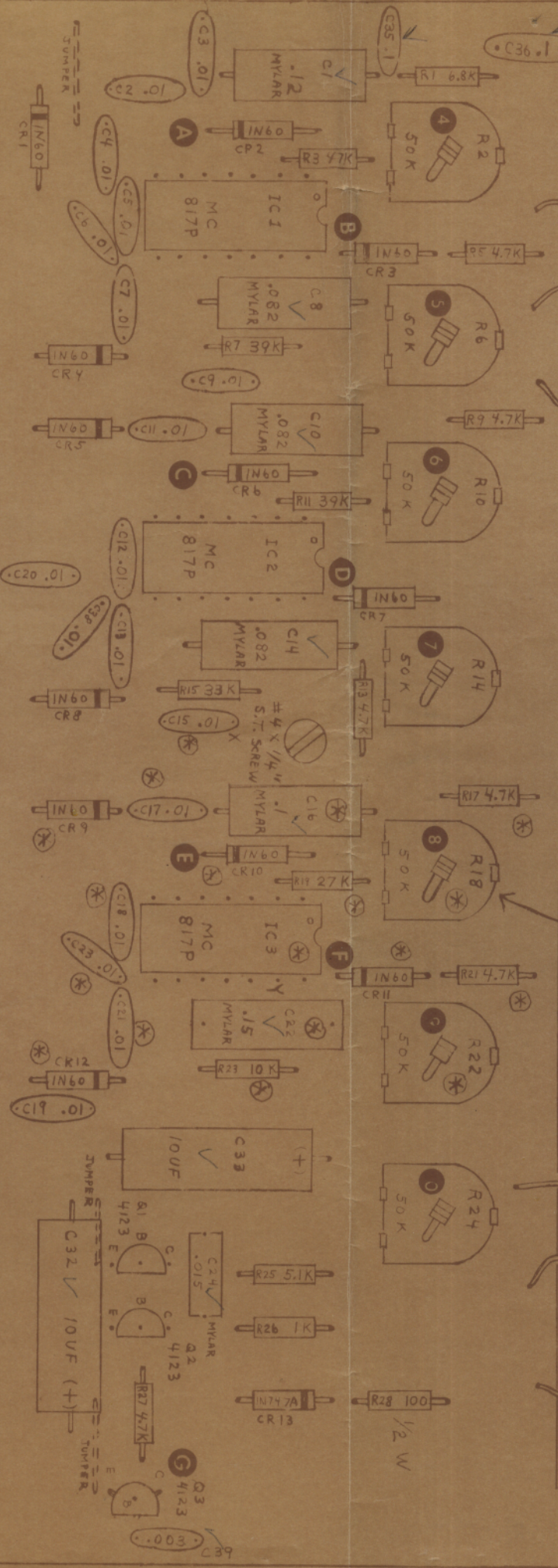
ALL WIRES 2 1/2" LONG



ALL WIRES 2 1/2" LONG

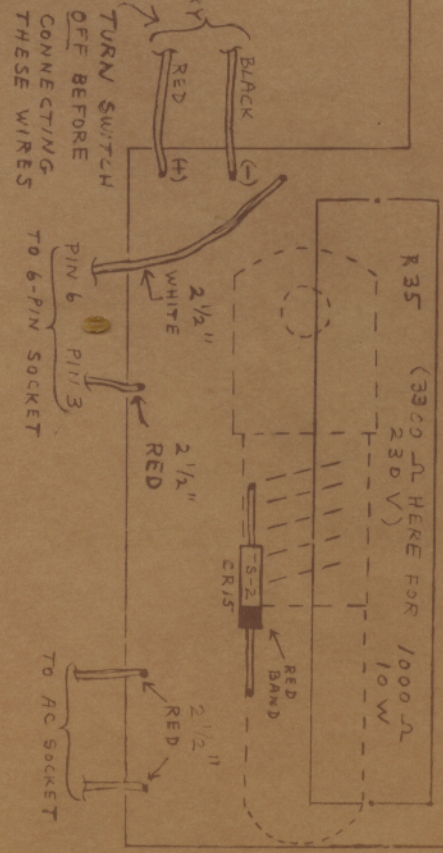


AFTER ASSEMBLY, SET ARMS ON ALL SMALL POTS TO 12 O'CLOCK



- A - SCOPE HERE. ADJUST POT (4) FOR 7 MILLISECOND TIMING PULSE.
- B - SCOPE HERE. ADJUST POTS (5) AND (5) FOR PULSE TRAVEL OF 1 TO 2 MILLISECONDS (1.5MS NEUTRAL). BOTH CONTROL LEVER AND TRIM ARE TO BE MOVED TO EXTREMES.
- C D E F - ADJUST SAME AS (B), USING RELATED POTS AND CONTROL LEVERS.
- G - SCOPE HERE. ADJUST POT (10) FOR 325 MICROSECOND PULSE WIDTH.

(\*) OMIT ON 3 CHANNEL TX ON 3 CHANNEL, INSTALL JUMPER WIRE BETWEEN X AND Y HOLES.



TURN SWITCH OFF BEFORE CONNECTING THESE WIRES

FROM BATTERY

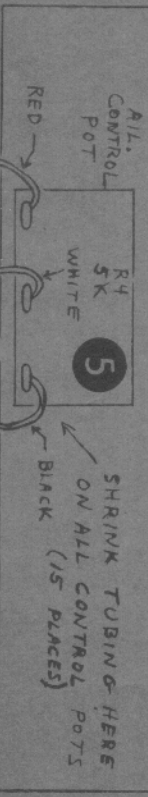
TO 6-PIN SOCKET

TO AC SOCKET



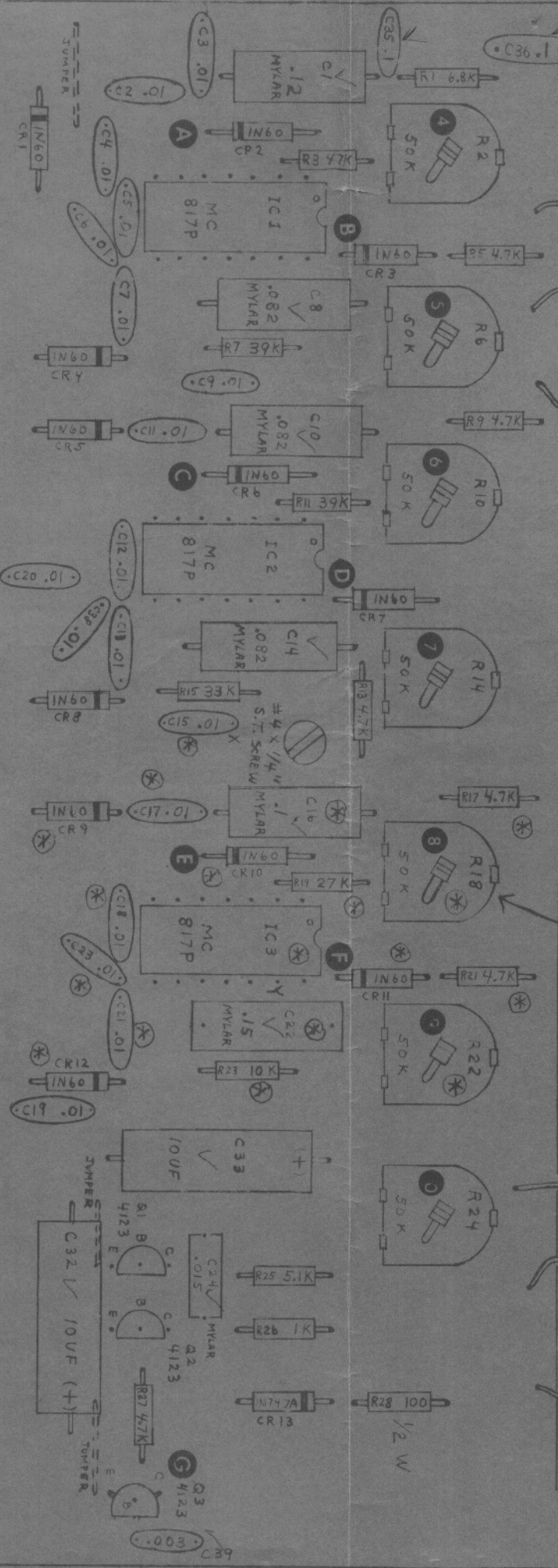
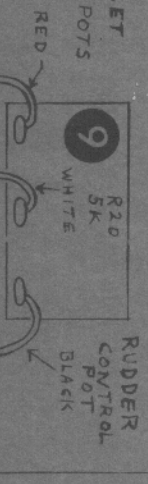
APPROXIMATE FINAL ADJUSTMENT POSITIONS.

ALL WIRES 2 1/2" LONG



AFTER ASSEMBLY, SET ARMS ON ALL SMALL POTS TO 12 O'CLOCK

ALL WIRES 2 1/2" LONG



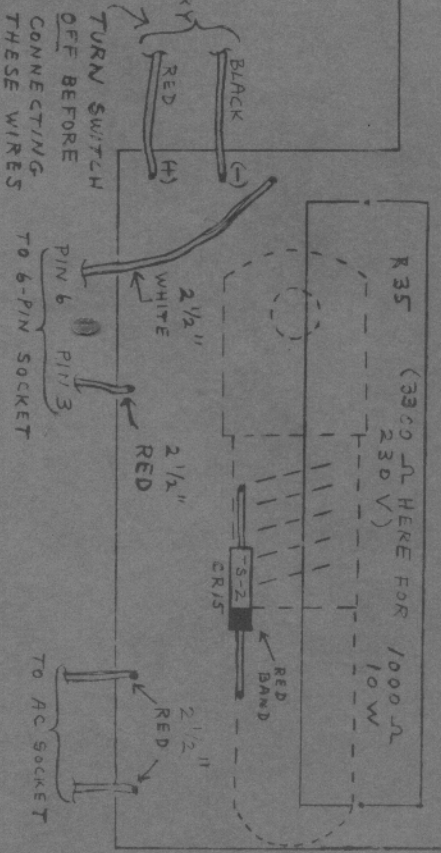
A - SCOPE HERE. ADJUST POT 4 FOR 7 MILLISECOND TIMING PULSE.

B - SCOPE HERE. ADJUST POTS 5 AND 5 FOR PULSE TRAVEL OF 1 TO 2 MILLISECOND (1.5 MS NEUTRAL). BOTH CONTROL LEVER AND TRIM ARE TO BE MOVED TO EXTREMES,

C D E F - ADJUST SAME AS B, USING RELATED POTS AND CONTROL LEVERS.

G - SCOPE HERE. ADJUST POT 10 FOR 325 MICROSECOND PULSE WIDTH.

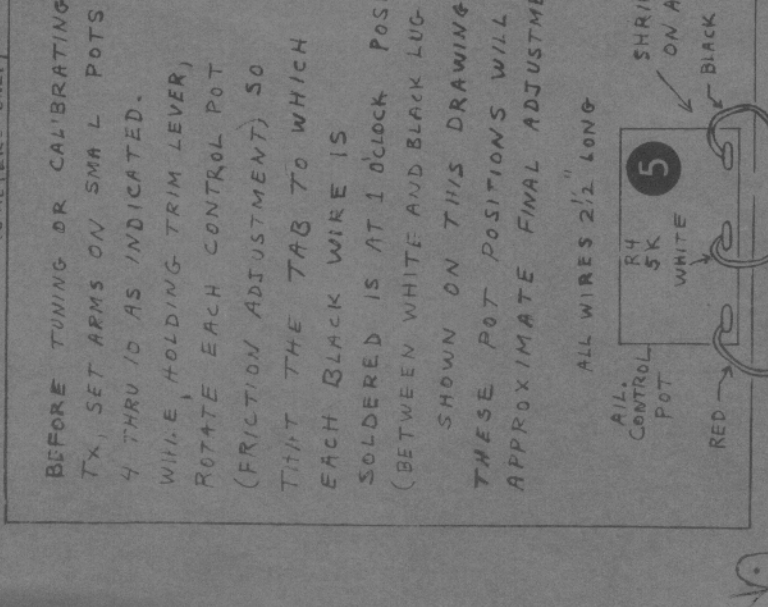
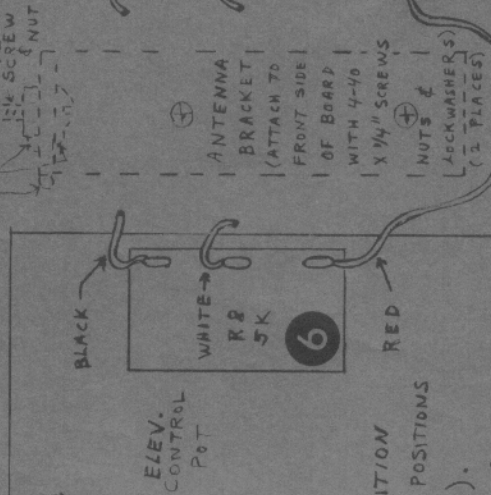
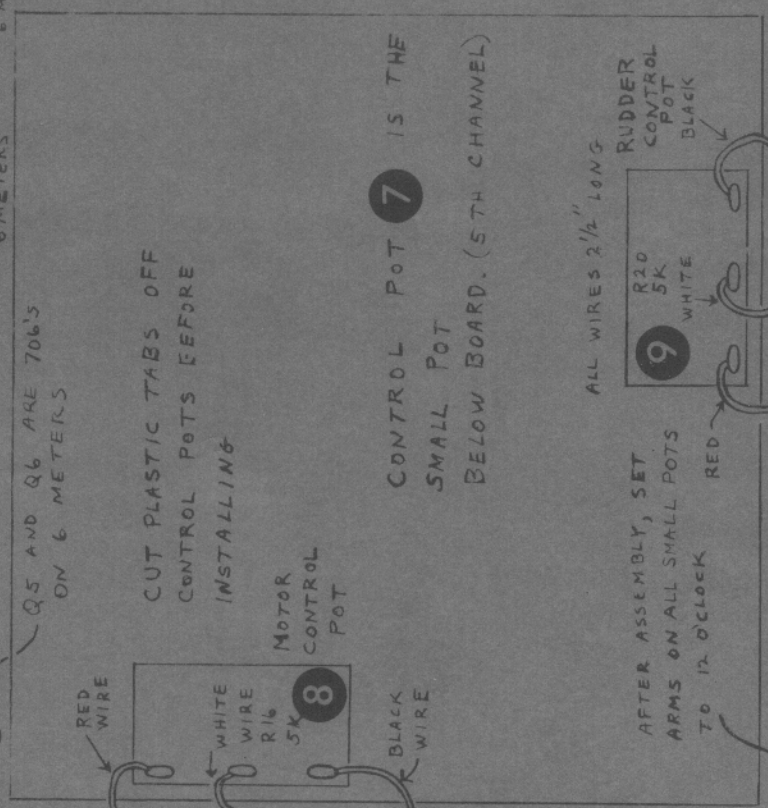
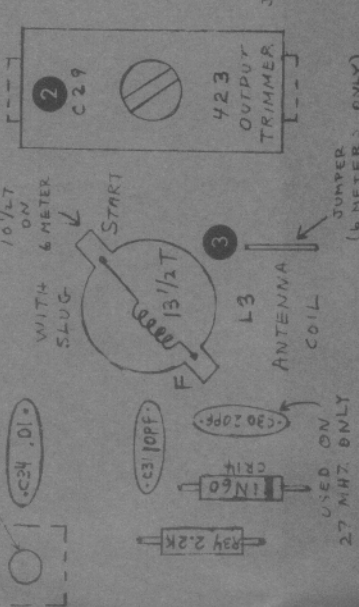
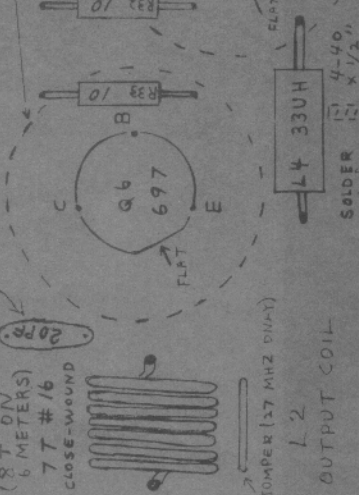
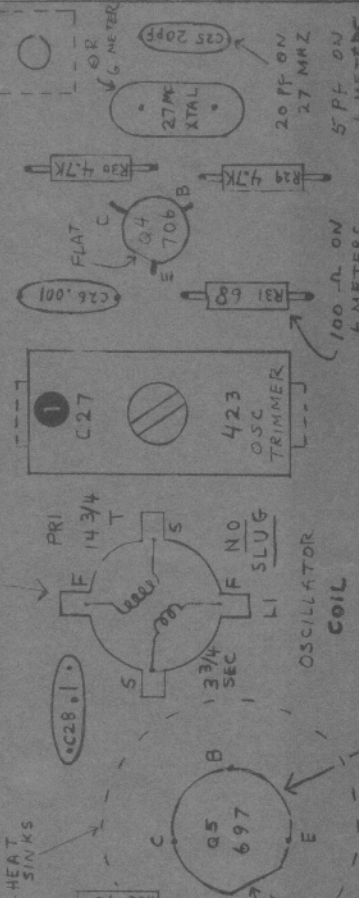
\* OMIT ON 3 CHANNEL TX ON 3 CHANNEL, INSTALL JUMPER WIRE BETWEEN X AND Y HOLES.



**C525 T  
PROPORTIONAL  
TRANSMITTER**

6 METER COIL HAS 73/4 T PRI. AND 23/4 T SEC.

MOUNT SHORT SIDE OF BRACKET BELOW BOARD



CUT PLASTIC TABS OFF CONTROL POTS BEFORE INSTALLING

CONTROL POT 7 IS THE SMALL POT BELOW BOARD. (5TH CHANNEL)

ALL WIRES 2 1/2" LONG

AFTER ASSEMBLY, SET ARMS ON ALL SMALL POTS TO 12 O'CLOCK

SHRINK TUBING HERE ON ALL CONTROL POTS (15 PLACES)

ALL WIRES 2 1/2" LONG

BEFORE TUNING OR CALIBRATING TX, SET ARMS ON SMALL POTS 4 THRU 10 AS INDICATED. WHILE HOLDING TRIM LEVER, ROTATE EACH CONTROL POT (FRICTION ADJUSTMENT) SO THAT THE TAB TO WHICH EACH BLACK WIRE IS SOLDERED IS AT 12 O'CLOCK POSITION (BETWEEN WHITE AND BLACK LUG POSITIONS SHOWN ON THIS DRAWING). THESE POT POSITIONS WILL CLOSELY APPROXIMATE FINAL ADJUSTMENT POSITIONS.

1/2 W

C36.1

C35.1

R1 6.8K

R2 50K

R3 50K

R4 50K

R5 50K

R6 50K

R7 50K

R8 50K

R9 4.7K

R10 50K

R11 4.7K

R12 50K

R13 50K

R14 50K

R15 50K

R16 50K

R17 4.7K

R18 50K

R19 50K

R20 5K

R21 50K

R22 50K

R23 50K

R24 50K

R25 50K

R26 50K

R27 50K

R28 100

R29 50K

R30 50K

R31 50K

R32 50K

R33 4.7K

R34 50K

R35 50K

R36 50K

R37 50K

R38 50K

R39 50K

R40 50K

R41 50K

R42 50K

R43 50K

R44 50K

R45 50K

R46 50K

R47 50K

R48 50K

R49 50K

R50 50K

R51 50K

R52 50K

R53 50K

R54 50K

R55 50K

R56 50K

R57 50K

R58 50K

R59 50K

R60 50K

R61 50K

R62 50K

R63 50K

R64 50K

R65 50K

R66 50K

R67 50K

R68 50K

R69 50K

R70 50K

R71 50K

R72 50K

R73 50K

R74 50K

R75 50K

R76 50K

R77 50K

R78 50K

R79 50K

R80 50K

R81 50K

R82 50K

R83 50K

R84 50K

R85 50K

R86 50K

R87 50K

R88 50K

R89 50K

R90 50K

R91 50K

R92 50K

R93 50K

R94 50K

R95 50K

R96 50K

R97 50K

R98 50K

R99 50K

R100 50K